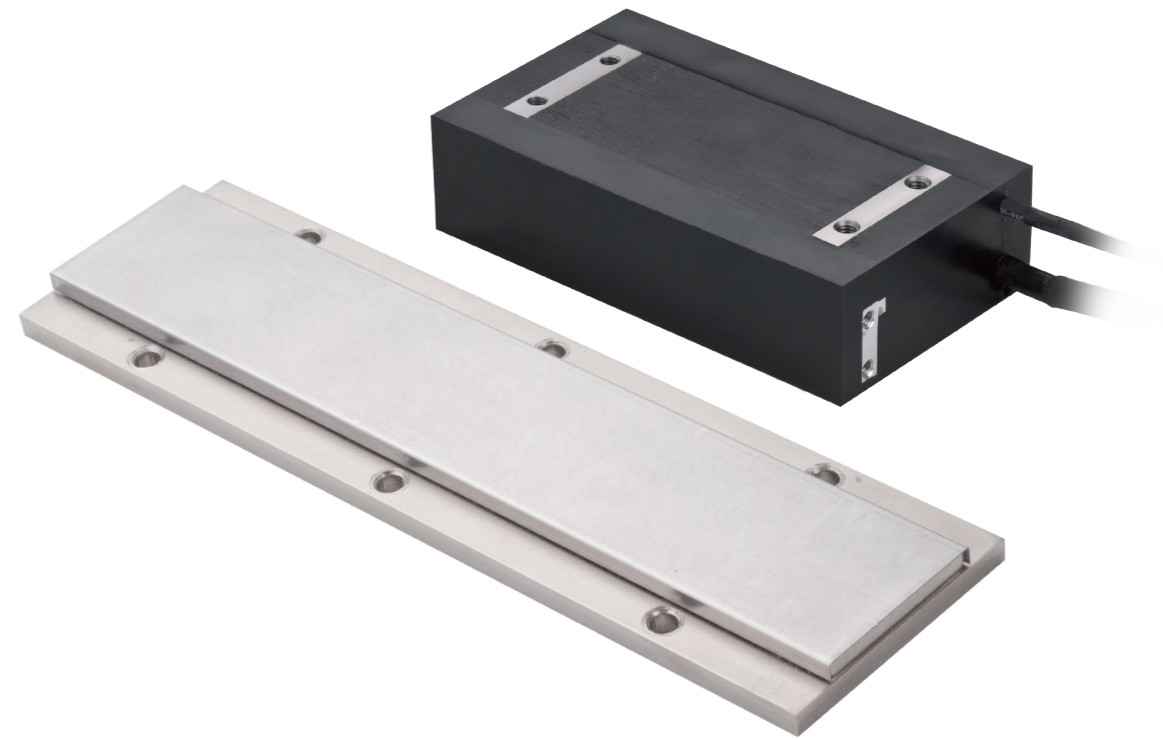


## Specifications

	Symbol	Unit	LMSS11
<b>Electrical Specifications</b>			
Continuous force(@120°C)	Fc	N	95
Continuous current(@120°C)	Ic	A(rms)	2.7
Peak force for 1 sec.	Fp	N	263
Peak current for 1 sec.	Ip	A (rms)	10.8
Force constant	Kf	N/A (rms)	35
Attraction force	Fa	N	311
Max. winding temp.	Tmax	°C	120
Electrical time constant	Ke	ms	3.8
Resistance (line to line at 25°C)	R25	Ω	6.2
Resistance (line to line at 120°C)	R120	Ω	8.2
Inductance (line to line)	L	mH	23.5
Pole pair pitch	2τ	mm	20
Minimum bending radius of cable	-	mm	39
Back emf constant(line to line)	Kv	Vrms/(m/s)	20.2
Motor constant(at 25°C)	Km	N/VV	11.5
Thermal resistance	Rth	°C/W	1.05
Thermal time constant	Tth	s	465
Thermal switch	-	-	3 PTC 120 In Series
Max. DC bus voltage	-	V	600
※All the electrical specifications in the table are in ±10% of tolerance.			
<b>Mechanical Specifications</b>			
Mass offorcer	Mf	kg	0.6
Unit mass of stator	Ms	kg/m	1.9

**HIWIN®**



**HIWIN®**

**HIWIN MIKROSYSTEM CORP.**

No.6, Jingke Central Rd.,  
Taichung Precision Machinery Park,  
Taichung 40852, Taiwan  
Tel: +886-4-23550110  
Fax: +886-4-23550123  
www.hiwinmikro.tw  
business@hiwinmikro.tw

**Global Sales And Customer Service Site**

**HIWIN GmbH**

OFFENBURG, GERMANY  
www.hiwin.de  
www.hiwin.eu  
info@hiwin.de

**HIWIN Schweiz GmbH**

JONA, SWITZERLAND  
www.hiwin.ch  
info@hiwin.ch

**HIWIN KOREA**

SUWON · CHANGWON, KOREA  
www.hiwin.kr  
info@hiwin.kr

**HIWIN JAPAN**

KOBE · TOKYO · NAGOYA · NAGANO ·  
TOHOKU · SHIZUOKA · HOKURIKU ·  
HIROSHIMA · FUKUOKA · KUMAMOTO,  
JAPAN  
www.hiwin.co.jp  
info@hiwin.co.jp

**HIWIN s.r.o.**

BRNO, CZECH REPUBLIC  
www.hiwin.cz  
info@hiwin.cz

**HIWIN CHINA**

SUZHOU, CHINA  
www.hiwin.cn  
info@hiwin.cn

**HIWIN USA**

CHICAGO, U.S.A.  
www.hiwin.com  
info@hiwin.com

**HIWIN SINGAPORE**

SINGAPORE  
www.hiwin.sg  
info@hiwin.sg

**Mega-Fabs Motion Systems, Ltd.**

HAIFA, ISRAEL  
www.mega-fabs.com  
info@mega-fabs.com

**HIWIN Srl**

BRUGHERIO, ITALY  
www.hiwin.it  
info@hiwin.it

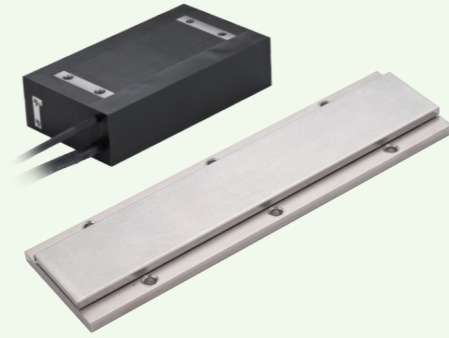
# LMSS11 Series Linear Motor

## Features

- Short length design to reduce stroke
- Optimized cogging force
- Insulation Class F

### Application

General automation, PCB, Inspection, Semiconductor



## LMSS11 Highlights

15m/s ↑  
Velocity

20G ↑  
Acceleration

100mm ↓  
Forcer length

## Model Description

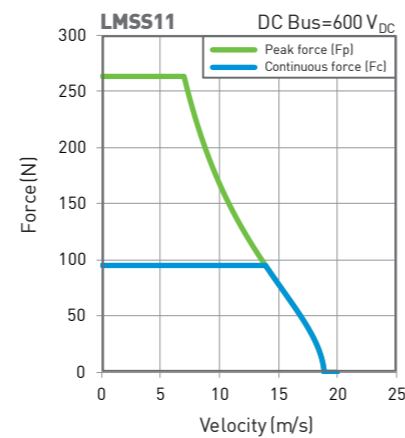
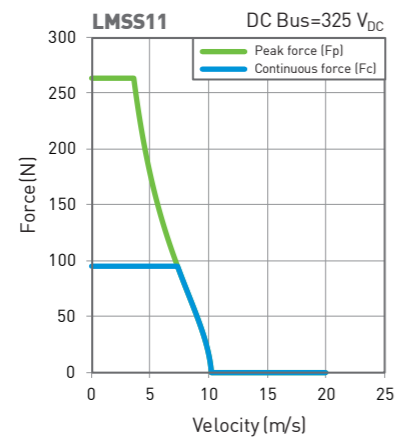
### Forcer Primary part

Series	Type	Width of forcer	Length of forcer
<b>LM</b>	<b>SS</b>	<b>1</b>	<b>1</b>
Linear motor	Linear motor type	1: 54mm	1: 96mm

### Stator Magnet track

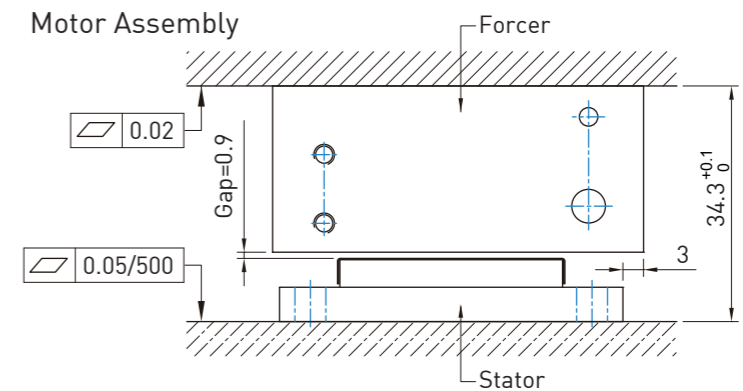
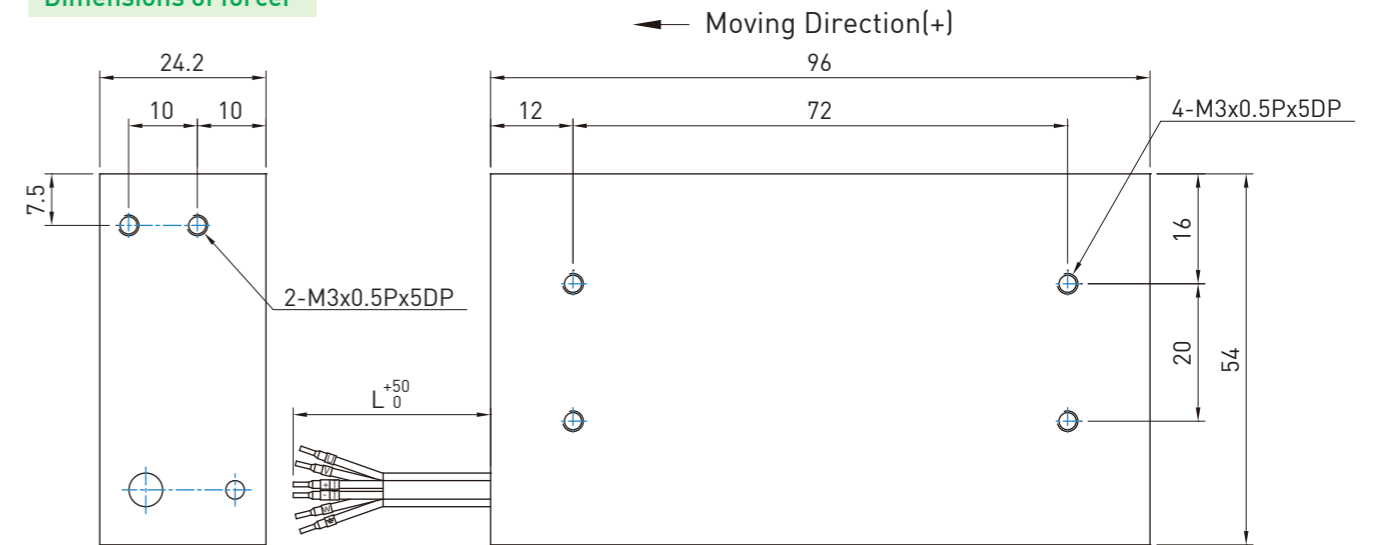
Series	Width of stator	Model	Length of stator
<b>LMSS</b>	<b>1</b>	<b>S</b>	<b>1</b>
Linear motor	1: 50mm	Standard	1: 80mm 2: 200mm

## F-V curves

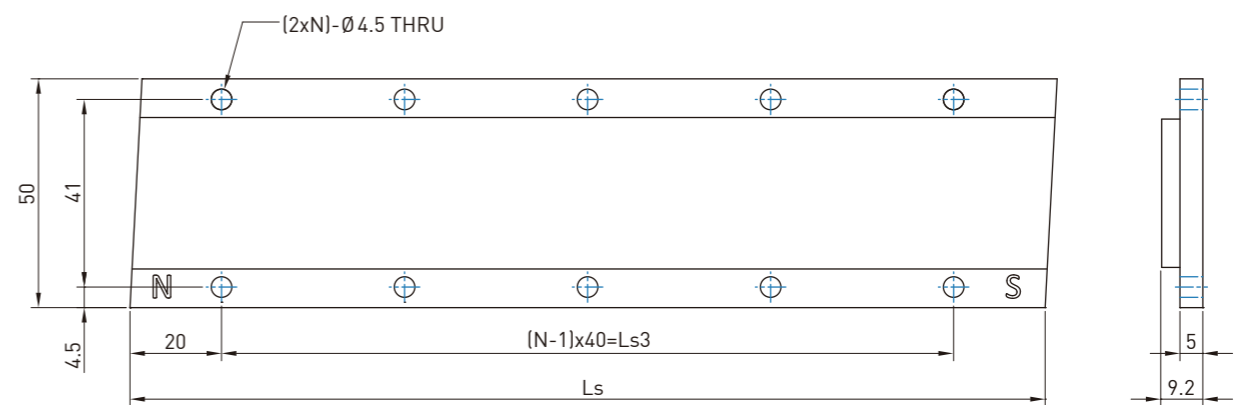


## Product Dimension

### Dimensions of forcer



### Dimensions of stator



Stator P/N:	Ls	N	Ls3
LMSS1S1	80	2	40
LMSS1S2	200	5	160

※ The specifications in this catalog are subject to change without notification.