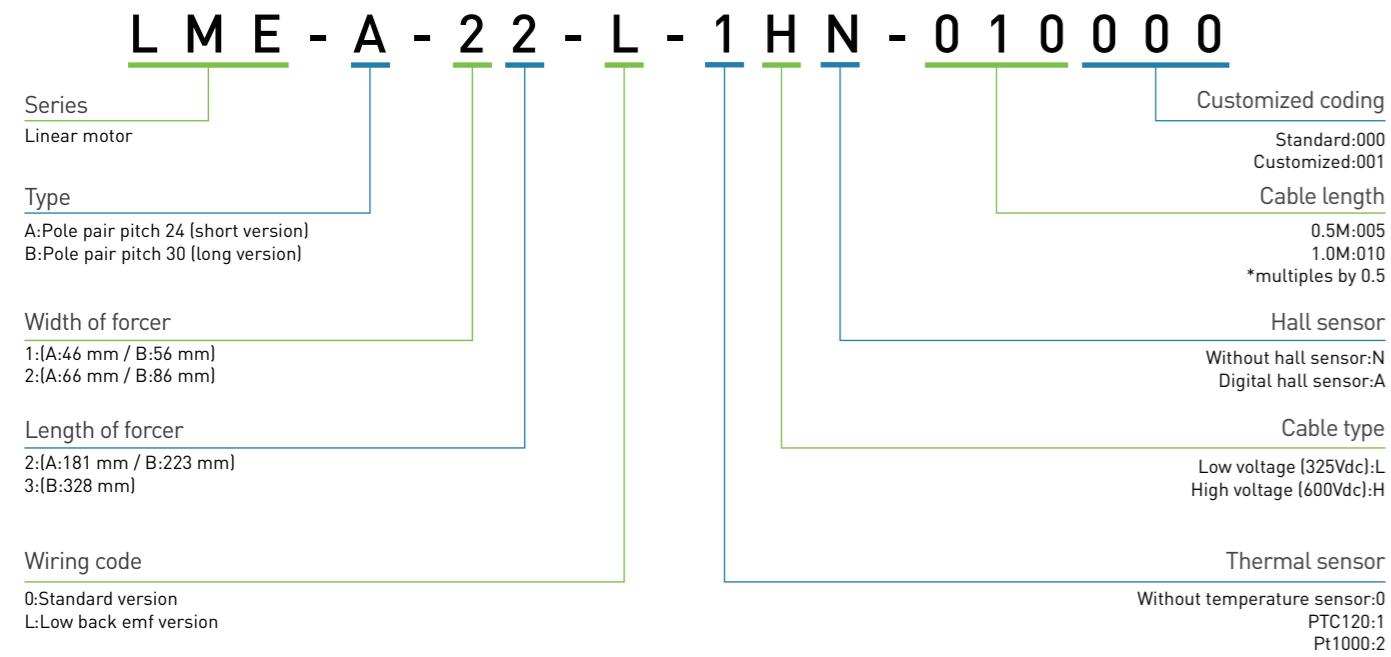
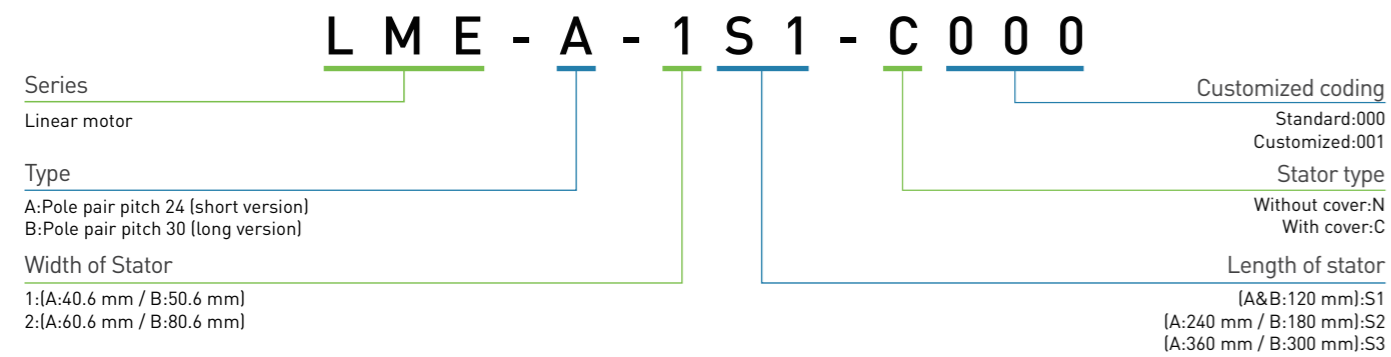


Model

LME Forcer



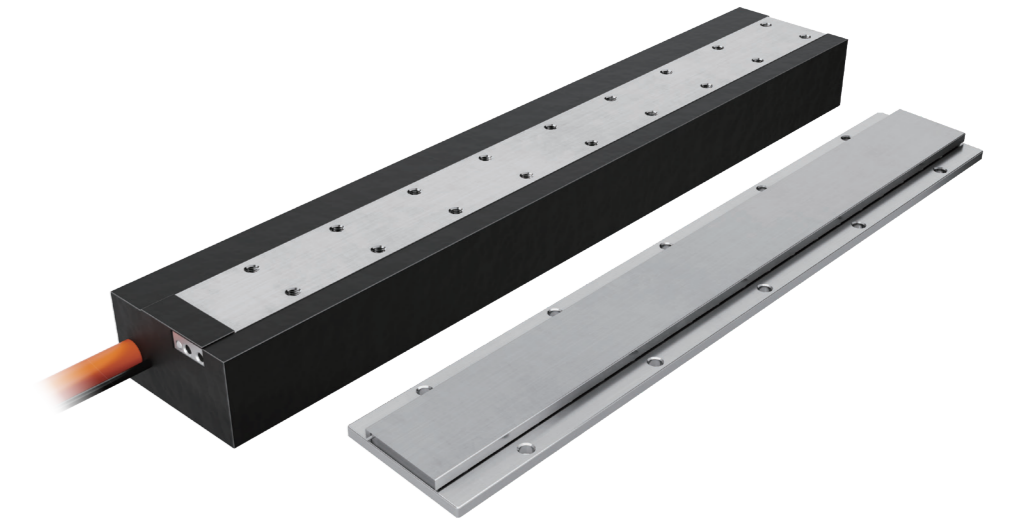
LME Stator



Industries / Applications



HIWIN® MIKROSYSTEM



HIWIN® MIKROSYSTEM

Global Sales And Customer Service Site

HIWIN MIKROSYSTEM CORP.
No. 6, Jingke Central Rd.,
Taichung Precision Machinery Park,
Taichung 408211, Taiwan
Tel: +886-4-2355-0110
Fax: +886-4-2355-0123
www.hiwinmikro.tw
business@hiwinmikro.tw

HIWIN GmbH
OFFENBURG, GERMANY
www.hiwin.de
www.hiwin.eu
info@hiwin.de

HIWIN Schweiz GmbH
JONA, SWITZERLAND
www.hiwin.ch
info@hiwin.ch

HIWIN KOREA
SUWON - CHANGWON, KOREA
www.hiwin.kr
info@hiwin.kr

HIWIN JAPAN
KOBE · NAGOYA · TOKYO · TOHOKU ·
NAGANO · SHIZUOKA · HOKURIKU ·
HIROSHIMA · FUKUOKA · KUMAMOTO,
JAPAN
www.hiwin.co.jp
info@hiwin.co.jp

HIWIN s.r.o.
BRNO, CZECH REPUBLIC
www.hiwin.cz
info@hiwin.cz

HIWIN CHINA
SUZHOU, CHINA
www.hiwin.cn
info@hiwin.cn

HIWIN USA
CHICAGO, U.S.A.
www.hiwin.com
info@hiwin.com

HIWIN FRANCE
STRASBOURG, FRANCE
www.hiwin.fr
info@hiwin.de

Mega-Fabs Motion Systems, Ltd.
HAIFA, ISRAEL
www.mega-fabs.com
info@mega-fabs.com

HIWIN Srl
BRUGHERIO, ITALY
www.hiwin.it
info@hiwin.it

HIWIN SINGAPORE
SINGAPORE
www.hiwin.sg
info@hiwin.sg

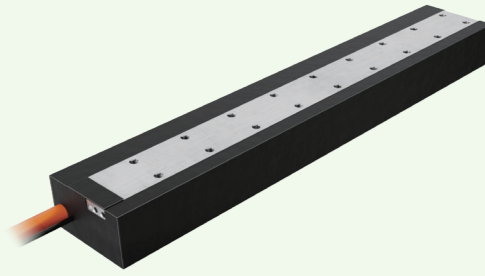
LME Series

Linear Motor

Product Features

The linear motor LME series has energy-saving, carbon-reducing and cost-effective performance indicators, and is a solution that complies with the ESG sustainability concept.

- The LME series broadens the linear motor specifications, which meets more requirements of diverse applications.
- The LME series increases the motor constant and thrust constant to 186 N/Arms, enhancing energy-saving features of machines.
- The LME series improves the thrust ratio per unit volume of the forcer, reduces number of stators, and makes the price more competitive in the market.



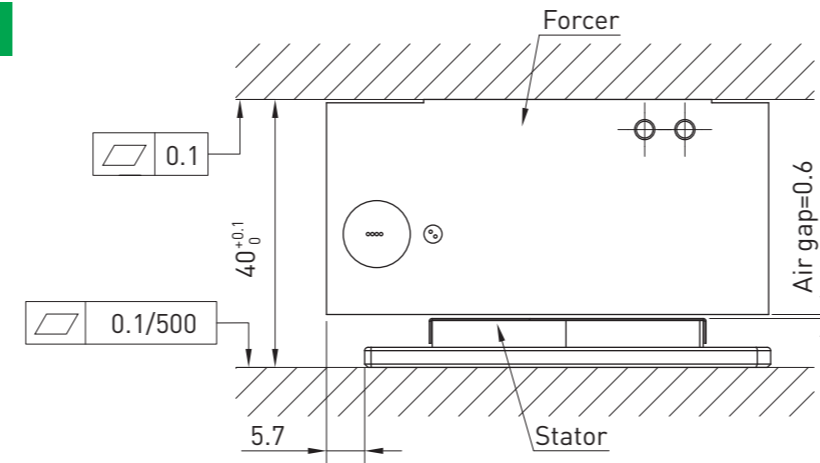
Specifications

	Symbol	Unit	LME-A-12	LME-A-22	LME-A-22-L	LME-B-13	LME-B-22	LME-B-23	LME-B-23-L	
Continuous force	Fc	N	160	342	330	394	548	819	826	
Continuous current	Ic	Arms	3	3	6	4.5	3	4.4	8.8	
Peak force (1s)	Fp	N	352	741	752	931	1319	2011	2119	
Peak current (1s)	Ip	Arms	12	12	24	18	12	18	36	
Force constant	Kf	N/Arms	53.3	114	55	87.5	182.8	186.1	93.9	
Attraction force	Fa	N	584	1153	1153	1480	1970	2962	2962	
Max. winding temperature	Tmax	°C				120				
Electrical time constant	Ke	ms	8.2	9.0	8	9.1	9.9	10.1	8.8	
Resistance (line to line, 25°C)	R25	Ω	7.5	11.3	2.9	5.2	12.8	8.3	2.1	
Resistance (line to line, 120°C)	R120	Ω	10.3	15.5	4	7.2	17.6	11.4	2.9	
Inductance (line to line)	L	mH	61.5	102	23.2	47.4	126.6	83.9	18.8	
Pole pair pitch	2τ	mm	24	24	24	30	30	30	30	
Motor cable bending radius	Rbend	mm				68				
Back emf constant (line to line)	Kv	Vrms/(m/s)	35.7	70.8	34.9	54.1	110.2	111.1	54.6	
Motor constant (25°C)	Km	N/√W	16.4	27.8	26.8	31	40.4	51.4	51.4	
Thermal resistance	Rth	°C/W	0.72	0.46	0.46	0.43	0.40	0.28	0.28	
Thermal time constant	Tth	s	1020	1560	1560	1980	2100	2880	2880	
Thermal switch	-	-	3PTC SNM120 In Series							
Max. DC bus voltage	-	Vdc	600							
Mass of forcer	Mf	kg	1.3	2	2	3	3.4	5	5	
Unit mass of stator	Ms	kg/m	1.5	2.5	2.5	2.3	4.1	4.1	4.1	
Width of stator	Ws	mm	40.6	60.6	60.6	50.6	80.6	80.6	80.6	
Length of stator / Dimension N	Ls	mm	120mm/N=2, 240mm/N=4, 360mm/N=6				120mm/N=2, 180mm/N=3, 300mm/N=5			
Stator mounting distance	Ws1	mm	32	52	52	42	72	72	72	
Total installation height	H	mm	40	40	40	40	40	40	40	

Note:
 *1: Except dimensions, the electrical specifications are in +/-10% of tolerance.
 *2: HIWIN reserves the right to modify the specifications above. Please refer final 2D drawings issued by HIWIN.

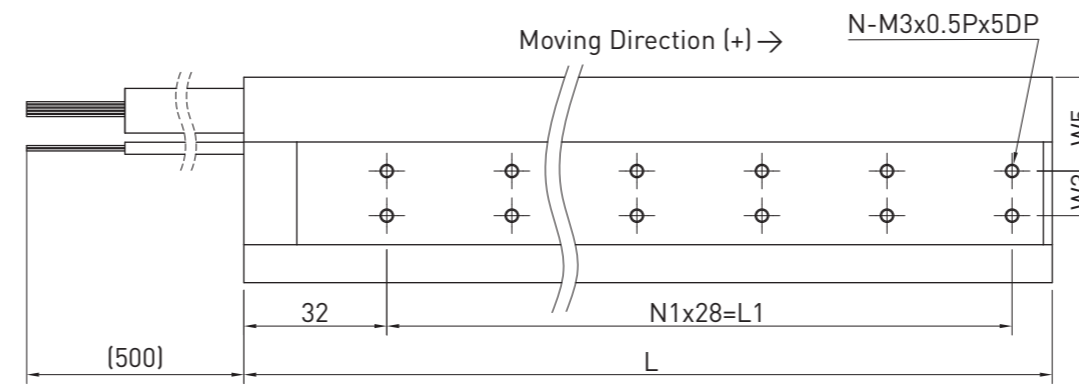
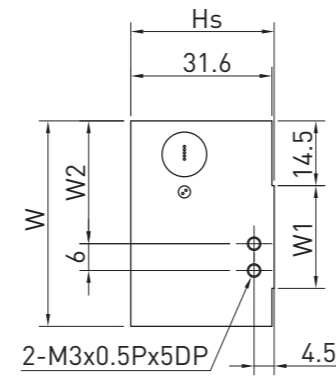
Product Dimensions

Dimensions of forcer

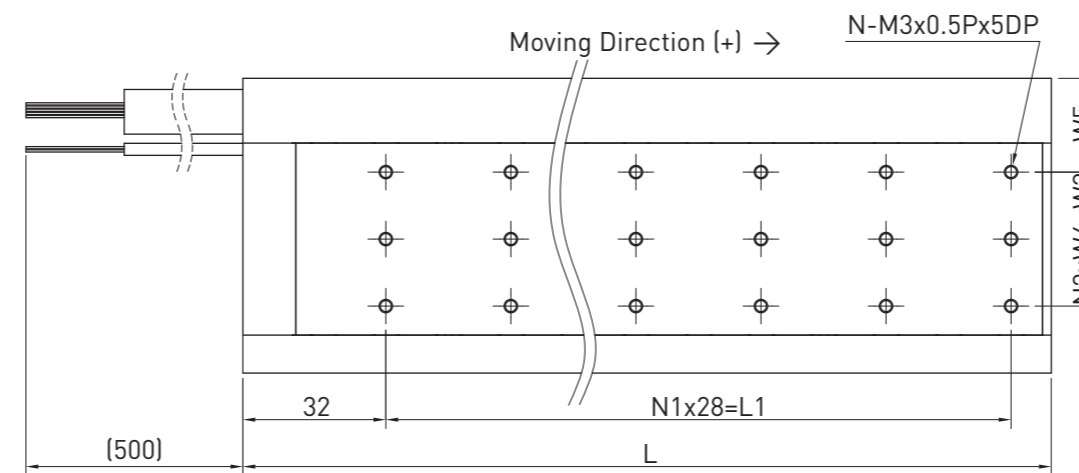
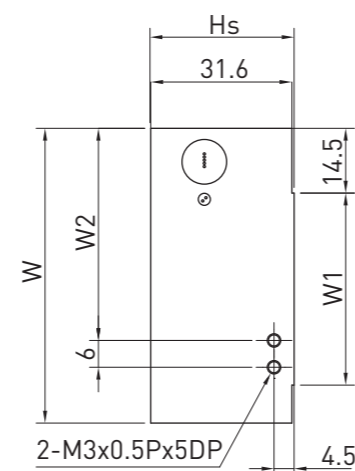


LME Forcer

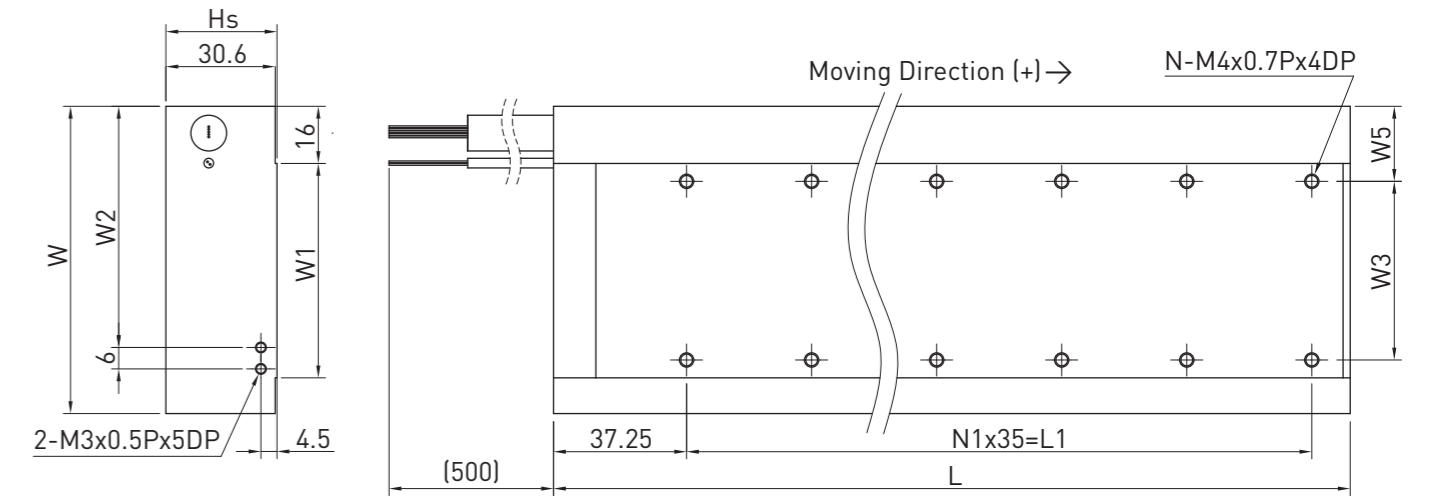
LME-A-1 forcer



LME-A-2 forcer

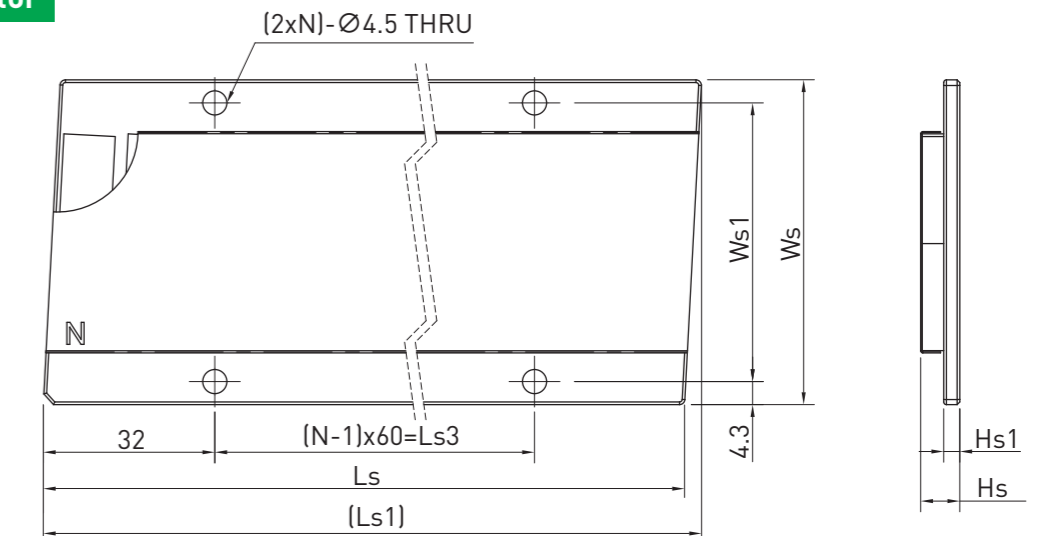


LME-B forcer



Type	L	L1	W	W1	W2	W3	W4	W5	N	N1	N2	Hs
LME-A-12	181	140	46	23	27.5	10	10	21	12	5	-	32.1
LME-A-22	181	140	66	43	47.5	30	15	21	18	5	2	32.1
LME-A-22-L	181	140	66	43	47.5	30	15	21	18	5	2	32.1
LME-B-13	328	280	56	30	37.5	20	-	21	18	8	-	31.1
LME-B-22	223	175	86	60	67.5	50	-	21	12	5	-	31.1
LME-B-23	328	280	86	60	67.5	50	-	21	18	8	-	31.1
LME-B-23-L	328	280	86	60	67.5	50	-	21	18	8	-	31.1

LME Stator



Type	Ls	Ls1	Ls3	Ws	Ws1	Hs	Hs1	N
LME-A-1S1	120	124.27	60	40.6	32	7.3	3	2
LME-A-1S2	240	244.27	180	40.6	32	7.3	3	4
LME-A-1S3	360	364.27	300	40.6	32	7.3	3	6
LME-A-2S1	120	123.18	60	60.6	52	7.3	3	2
LME-A-2S2	240	243.18	180	60.6	52	7.3	3	4
LME-A-2S3	360	363.18	300	60.6	52	7.3	3	6
LME-B-1S1	120	124.25	60	50.6	42	8.3	4	2
LME-B-1S2	180	184.25	120	50.6	42	8.3	4	3
LME-B-1S3	300	304.25	240	50.6	42	8.3	4	5
LME-B-2S1	120	122.53	60	80.6	72	8.3	4	2
LME-B-2S2	180	182.53	120	80.6	72	8.3	4	3
LME-B-2S3	300	302.53	240	80.6	72	8.3	4	5